

Welcome: ...

to the latest edition of the North Somerset Partnership Stakeholder Bulletin.

The partnership review mentioned in the last Bulletin has now been concluded and a new structure and focus for the partnership agreed (for more details of the partnership review process and outcomes please see the article below).

Whilst circumstances continue to be challenging across all organisations partners remain committed to partnership working and we feel that the changes agreed will not only allow us to build on the previous successes of the partnership but also put us in a good position to achieve the best possible outcomes for communities when meeting local needs.

A key area of partnership work for the future will be the successful implementation of the projects being funded by the Performance Reward Grant. These projects build on the excellent work that resulted from our Local Area Agreement programme and aim to meet significant local priorities, including supporting older people and children and families, and addressing the consequences of domestic violence and alcohol misuse. An outline of all the projects can be found later in this bulletin.

We will continue to keep you updated about the development of our partnership activity as our new structure develops and further information can be found on our website:

www.northsomersetpartnership.org.uk

Nigel Ashton
Chairman, North Somerset Partnership

In this issue:

- Partnership Review
- Building on our successful Local Area Agreement

Partnership Review

At its meeting on the 19 September the NSP Board agreed a new partnership structure which will take effect from the 1 October 2011.

As part of the re-structure the current Executive and delivery partnerships will be decommissioned and future partnership activity will be focused through three Boards.

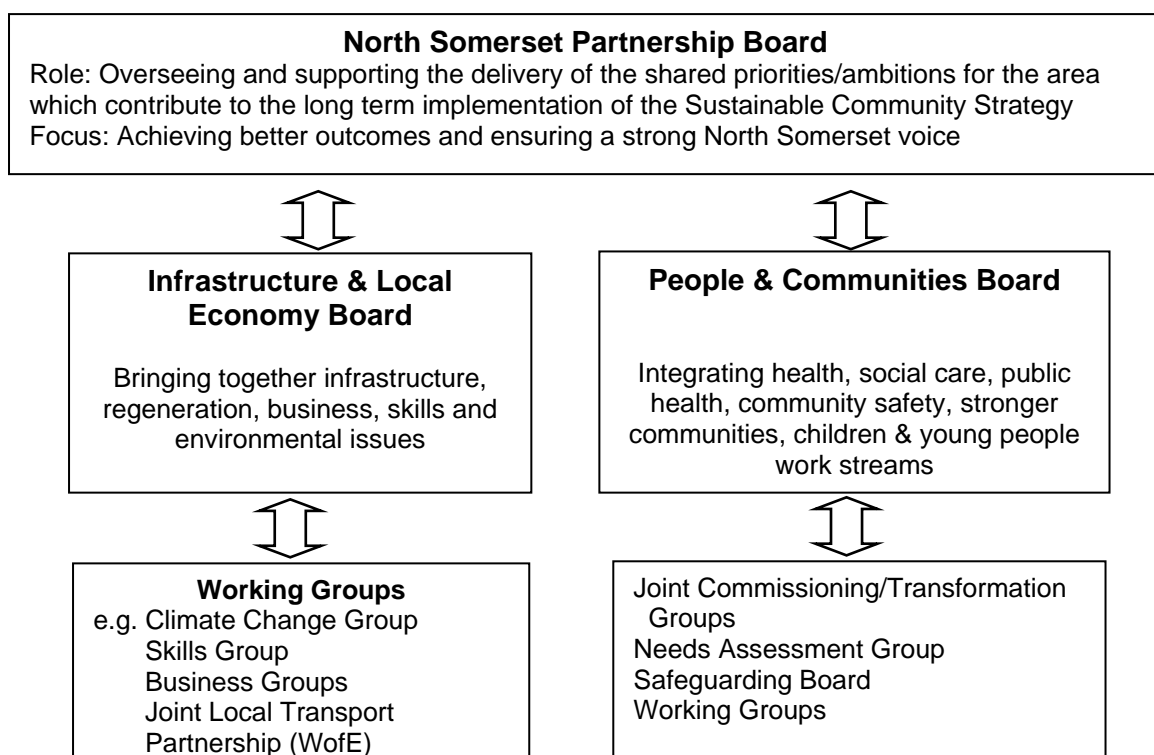
The three Boards are an overarching NSP Board, which will be much as the current Board, and two integrated work stream Boards replacing the four delivery partnerships. These work stream Boards are a People & Communities Board and an Infrastructure and Local Economy Board. The work stream Boards will have an executive role and be more action focused.

The People & Communities Board will bring together the current Health & Wellbeing Partnership, the Safer Stronger Partnership and the Children & Families Partnership and take on the statutory duties around these work areas. The Infrastructure and Local Economy Board will replace the Transport, Economy & Environment group. Although it has no statutory duties there is a clear need for a strong voice on economic and environmental issues as we link into the developing sub-regional bodies such as the Local Economic Partnership.

Now the new structure has been adopted a review of the sub-structures already in place below the two integrated work stream Boards will take place. This review will identify where benefits could be gained by joining up activity across work streams and will report to the NSP Board in April 2012.

These changes are the result of a review of the partnership which started in February 2011. The review recognised that the Partnership needed to respond to the changing policy context following the election of the coalition government and the reduced resources that will be available to partners in the future. It also sought to build on the successes of the last three years not least of which was the successful completion of our Local Area Agreement, with the top results nationally.

Our new structure:



Building on our successful Local Area Agreement

The 2007-2010 North Somerset Local Area Agreement (LAA) results were the best in the country. This fantastic achievement resulted in the partnership achieving over £2.5m of performance reward grant. This money has been used by the partnership to fund a number of projects put forward by the delivery partnerships over the next two to three years. These projects build on the excellent work developed during the LAA.

The projects are:

Business Development Centre

Funding will support development of managed workspace. This will provide new and growing small businesses flexible short-term leases, expandable space, value added on-site business support services including training and networking, shared office services and access to equipment.

Community Alcohol Outreach Service

This project will pilot a community alcohol outreach service across North Somerset to reach adults who currently find it difficult to access help to address their alcohol misuse.

Community Connect

Community Connect builds on the successful community development service created under the Partnership for Older People Project. The project will provide support, information and advice to older people in a number of ways for example through community agents, community café's or community connect volunteers.

Domestic Abuse Service

The funding for this project will provide holistic support to victims of domestic abuse and help to reduce repeat victimisation in the longer term through counselling and wider support for survivors.

Green Technology Centre

This project will support the development of a Model of Excellence in Green Technology. Based at Weston College's Centre of Excellence for Construction and Engineering it will provide opportunities for people to train in the installation and use of green technology and encourage sustainability amongst business and the wider community.

Neighbourhood Management

Building on the successful delivery of the Neighbourhood Management programme in South Ward, Weston-super-Mare the project will extend this way of working into Central and West Wards of Weston-super-Mare.

Total Family

This project aims to reduce pressure on services by developing new ways of working to provide early support to vulnerable families, particularly those that need the help.

All these projects began in April 2011 when they received their first funding instalment. Projects will be monitored on a quarterly basis by the new project boards against an agreed set of targets and outcomes. The NSP Board will receive annual updates.

Further information can be found on the NSP website at:

www.northsomersetpartnership.org.uk



September 2011